

CD3511---105 Series

FEATURES

- Silver plating type, low cost design
- High power, high saturation inductors
- Available on tape and reel for auto surface mounting
- Suitable for reflow soldering

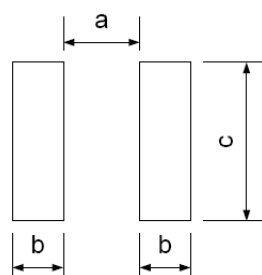
APPLICATIONS

- DC-DC convertor
- LCD TV
- Notebooks
- PDA
- MP3-MP4player
- Digital camera
- Portable CDR-W

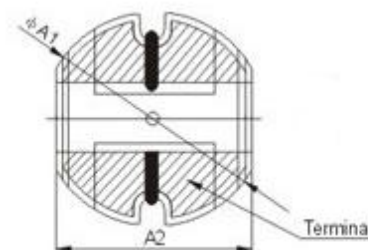
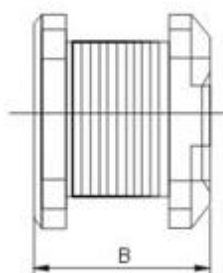
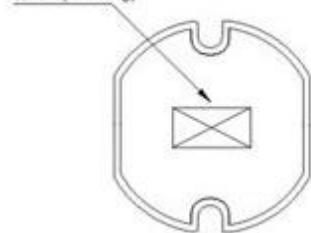
Operating temperature range: -25℃~+120℃ (Including self-heating)

SHAPE AND DIMENSIONS

Recommended Land Pattern



标志: (Marking)



Unit:mm

Series	A1	A2	B	a Typ.	b Typ.	c Typ.
CD3511	3.5±0.3	3.0±0.3	1.1±0.2	0.80	1.60	3.50
CD3516	3.5±0.3	3.0±0.3	1.6±0.2	0.80	1.60	3.50
CD32	3.5±0.3	3.0±0.3	2.0±0.3	0.80	1.60	3.50
CD43	4.5±0.3	4.0±0.3	3.2±0.3	1.50	1.75	4.50
CD52	5.8±0.3	5.2±0.3	2.5±0.3	1.70	2.15	5.50
CD53	5.8±0.3	5.2±0.3	3.0±0.3	1.70	2.15	5.50
CD54	5.8±0.3	5.2±0.3	4.5±0.35	1.70	2.15	5.50
CD73	7.8±0.3	7.0±0.3	4.5±0.5	2.00	3.00	7.50
CD75	7.8±0.3	7.0±0.3	5.0±0.5	2.00	3.00	7.50
CD104	10.0±0.3	9.0±0.3	4.5±0.5	2.50	3.75	9.50
CD105	10.0±0.3	9.0±0.3	5.4±0.5	2.50	3.75	9.50

Electrical Characteristics

CD3511 Series

Part Number	Inductance	Test Conditions	DC Resistance Max.	Saturation Current	Heat Rating Current
Unit	uH	-	OHM	A	A
Symbol	L	-	DCR	Isat	Irms
CD3511-1R0NT	1.0±20%	100KHz,0.1V	0.048	1.70	1.60
CD3511-1R5NT	1.5±20%	100KHz,0.1V	0.100	1.63	1.55
CD3511-2R2NT	2.2±20%	100KHz,0.1V	0.078	1.54	1.47
CD3511-3R3NT	3.3±20%	100KHz,0.1V	0.126	1.43	1.34
CD3511-3R9MT	3.9±20%	100KHz,0.1V	0.140	1.35	1.24
CD3511-4R7MT	4.7±20%	100KHz,0.1V	0.158	1.33	1.22
CD3511-5R6MT	5.6±20%	100KHz,0.1V	0.186	1.25	1.09
CD3511-6R8MT	6.8±20%	100KHz,0.1V	0.213	1.07	0.96
CD3511-8R2MT	8.2±20%	100KHz,0.1V	0.238	0.94	0.84
CD3511-100MT	10±20%	100KHz,0.1V	0.307	0.81	0.70
CD3511-120MT	12±20%	100KHz,0.1V	0.372	0.74	0.65
CD3511-150MT	15±20%	100KHz,0.1V	0.466	0.67	0.59
CD3511-180MT	18±20%	100KHz,0.1V	0.515	0.63	0.54
CD3511-220MT	22±20%	100KHz,0.1V	0.656	0.55	0.48
CD3511-270MT	27±20%	100KHz,0.1V	0.774	0.52	0.43
CD3511-330MT	33±20%	100KHz,0.1V	1.021	0.45	0.37
CD3511-390MT	39±20%	100KHz,0.1V	1.122	0.41	0.32
CD3511-470MT	47±20%	100KHz,0.1V	1.509	0.34	0.26
CD3511-560MT	56±20%	100KHz,0.1V	1.675	0.32	0.24
CD3511-680MT	68±20%	100KHz,0.1V	1.919	0.30	0.23
CD3511-820MT	82±20%	100KHz,0.1V	2.644	0.29	0.21
CD3511-101MT	100±20%	100KHz,0.1V	2.870	0.26	0.19
CD3511-121MT	120±20%	100KHz,0.1V	0.084	0.25	0.17
CD3511-151MT	150±20%	100KHz,0.1V	4.774	0.24	0.16
CD3511-181MT	180±20%	100KHz,0.1V	5.699	0.22	0.14

CD3516 Series

Part Number	Inductance	Test Conditions	DC Resistance Max.	Saturation Current	Heat Rating Current
Unit	uH	-	OHM	A	A
Symbol	L	-	DCR	Isat	Irms
CD3516-2R2NT	2.2±20%	100KHz,0.1V	0.24	1.29	1.20
CD3516-3R3NT	3.3±20%	100KHz,0.1V	0.27	1.16	1.08
CD3516-4R7MT	4.7±20%	100KHz,0.1V	0.3	1.08	1.00
CD3516-6R8MT	6.8±20%	100KHz,0.1V	0.47	0.89	0.80
CD3516-8R2MT	8.2±20%	100KHz,0.1V	0.52	0.84	0.76
CD3516-100MT	10±20%	100KHz,0.1V	0.55	0.78	0.70
CD3516-120MT	12±20%	100KHz,0.1V	0.75	0.66	0.60
CD3516-150MT	15±20%	100KHz,0.1V	0.91	0.57	0.50
CD3516-220MT	22±20%	100KHz,0.1V	1.2	0.48	0.40
CD3516-270MT	27±20%	100KHz,0.1V	1.5	0.43	0.36

CD32 Series

Part Number	Inductance	Test Conditions	DC Resistance Max.	Saturation Current	Heat Rating Current
Unit	uH	-	OHM	A	A

Symbol	L	-	DCR	Isat	Irms
CD32-1R0NT	1.0±20%	100KHz,0.1V	0.045	2.32	2.20
CD32-1R2NT	1.2±20%	100KHz,0.1V	0.050	2.22	2.10
CD32-1R5NT	1.5±20%	100KHz,0.1V	0.055	1.84	1.70
CD32-1R8NT	1.8±20%	100KHz,0.1V	0.070	1.75	1.65
CD32-2R2NT	2.2±20%	100KHz,0.1V	0.085	1.72	1.60
CD32-3R3NT	3.3±20%	100KHz,0.1V	0.120	1.13	1.04
CD32-3R9MT	3.9±20%	100KHz,0.1V	0.125	1.10	1.00
CD32-4R7MT	4.7±20%	100KHz,0.1V	0.135	1.10	1.00
CD32-5R6MT	5.6±20%	100KHz,0.1V	0.145	1.05	0.95
CD32-6R8MT	6.8±20%	100KHz,0.1V	0.200	1.05	0.95
CD32-8R2MT	8.2±20%	100KHz,0.1V	0.250	1.03	0.92
CD32-100MT	10±20%	100KHz,0.1V	0.320	1.00	0.90
CD32-120MT	12±20%	100KHz,0.1V	0.350	0.96	0.85
CD32-150MT	15±20%	100KHz,0.1V	0.460	0.85	0.75
CD32-180MT	18±20%	100KHz,0.1V	0.520	0.80	0.70
CD32-220MT	22±20%	100KHz,0.1V	0.650	0.68	0.60
CD32-270MT	27±20%	100KHz,0.1V	0.750	0.63	0.55
CD32-330MT	33±20%	100KHz,0.1V	0.920	0.57	0.50
CD32-390MT	39±20%	100KHz,0.1V	1.120	0.55	0.48
CD32-470MT	47±20%	100KHz,0.1V	1.270	0.54	0.45
CD32-560MT	56±20%	100KHz,0.1V	1.500	0.37	0.30
CD32-680MT	68±20%	100KHz,0.1V	2.000	0.34	0.26

CD43 Series

Part Number	Inductance	Test Conditions	DC Resistance Max.	Saturation Current	Heat Rating Current
Unit	uH	-	OHM	A	A
Symbol	L	-	DCR	Isat	Irms
CD43-1R0NT	1.0±20%	100KHz,0.1V	0.0487	2.67	2.56
CD43-1R4NT	1.4±20%	100KHz,0.1V	0.0542	2.63	2.52
CD43-1R8NT	1.8±20%	100KHz,0.1V	0.0637	2.12	1.95
CD43-2R2NT	2.2±20%	100KHz,0.1V	0.0712	1.87	1.75
CD43-2R7NT	2.7±20%	100KHz,0.1V	0.0787	1.72	1.58
CD43-3R3NT	3.3±20%	100KHz,0.1V	0.0862	1.53	1.44
CD43-3R9MT	3.9±20%	100KHz,0.1V	0.0937	1.45	1.33
CD43-4R7MT	4.7±20%	100KHz,0.1V	0.1087	1.32	1.15
CD43-5R6MT	5.6±20%	100KHz,0.1V	0.1257	1.24	1.12
CD43-6R8MT	6.8±20%	100KHz,0.1V	0.1312	1.21	1.10
CD43-8R2MT	8.2±20%	100KHz,0.1V	0.1462	1.18	1.04
CD43-100MT	10±20%	100KHz,0.1V	0.182	1.18	1.04
CD43-120MT	12±20%	100KHz,0.1V	0.210	1.08	0.97
CD43-150MT	15±20%	100KHz,0.1V	0.235	1.01	0.85
CD43-180MT	18±20%	100KHz,0.1V	0.338	0.93	0.74
CD43-220MT	22±20%	100KHz,0.1V	0.378	0.83	0.68
CD43-270MT	27±20%	100KHz,0.1V	0.522	0.77	0.62
CD43-330MT	33±20%	100KHz,0.1V	0.540	0.65	0.56
CD43-390MT	39±20%	100KHz,0.1V	0.587	0.64	0.52
CD43-470MT	47±20%	100KHz,0.1V	0.844	0.56	0.44
CD43-560MT	56±20%	100KHz,0.1V	0.937	0.52	0.42
CD43-680MT	68±20%	100KHz,0.1V	1.117	0.49	0.37

CD52 Series

Part Number	Inductance	Test Conditions	DC Resistance Max.	Saturation Current	Heat Rating Current
Unit	uH	-	OHM	A	A
Symbol	L	-	DCR	Isat	Irms
CD52-1R2NT	1.2±20%	100KHz,0.1V	0.05	4.45	4.2
CD52-2R2NT	2.2±20%	100KHz,0.1V	0.07	3.75	3.5
CD52-3R3NT	3.3±20%	100KHz,0.1V	0.10	2.87	2.7
CD52-3R9MT	3.9±20%	100KHz,0.1V	0.12	2.65	2.4
CD52-4R7MT	4.7±20%	100KHz,0.1V	0.14	2.32	2.0
CD52-5R6MT	5.6±20%	100KHz,0.1V	0.15	2.04	1.8
CD52-6R8MT	6.8±20%	100KHz,0.1V	0.16	1.75	1.5
CD52-8R2MT	8.2±20%	100KHz,0.1V	0.18	1.66	1.4
CD52-100MT	10±20%	100KHz,0.1V	0.20	1.54	1.3
CD52-120MT	12±20%	100KHz,0.1V	0.23	1.28	1.1
CD52-150MT	15±20%	100KHz,0.1V	0.25	1.23	1.05
CD52-180MT	18±20%	100KHz,0.1V	0.30	1.21	1.00
CD52-220MT	22±20%	100KHz,0.1V	0.35	1.15	0.90
CD52-270MT	27±20%	100KHz,0.1V	0.40	1.08	0.85
CD52-330MT	33±20%	100KHz,0.1V	0.50	0.97	0.75
CD52-390MT	39±20%	100KHz,0.1V	0.55	0.90	0.70
CD52-470MT	47±20%	100KHz,0.1V	0.65	0.81	0.60
CD52-560MT	56±20%	100KHz,0.1V	0.75	0.76	0.55
CD52-680MT	68±20%	100KHz,0.1V	0.95	0.73	0.50
CD52-820MT	82±20%	100KHz,0.1V	1.20	0.59	0.45
CD52-101MT	100±20%	100KHz,0.1V	1.40	0.57	0.40
CD52-121MT	120±20%	100KHz,0.1V	1.75	0.51	0.35
CD52-151MT	150±20%	100KHz,0.1V	2.00	0.36	0.25
CD52-181MT	180±20%	100KHz,0.1V	2.60	0.40	0.22
CD52-221MT	220±20%	100KHz,0.1V	3.00	0.33	0.20
CD52-271MT	270±20%	100KHz,0.1V	3.70	0.27	0.18
CD52-331MT	330±20%	100KHz,0.1V	4.30	0.25	0.17
CD52-391MT	390±20%	100KHz,0.1V	6.00	0.23	0.16
CD52-471MT	470±20%	100KHz,0.1V	6.70	0.21	0.15

CD53 Series

Part Number	Inductance	Test Conditions	DC Resistance Max.	Saturation Current	Heat Rating Current
Unit	uH	-	OHM	A	A
Symbol	L	-	DCR	Isat	Irms
CD53-1R0NT	1.0±20%	100KHz,0.1V	0.03	4.75	4.5
CD53-2R2NT	2.2±20%	100KHz,0.1V	0.03	3.75	3.5
CD53-3R3NT	3.3±20%	100KHz,0.1V	0.05	3.03	2.8
CD53-3R9MT	3.9±20%	100KHz,0.1V	0.06	2.87	2.6
CD53-4R7MT	4.7±20%	100KHz,0.1V	0.07	2.67	2.5
CD53-5R6MT	5.6±20%	100KHz,0.1V	0.08	2.55	2.4
CD53-6R8MT	6.8±20%	100KHz,0.1V	0.09	2.43	2.2
CD53-8R2MT	8.2±20%	100KHz,0.1V	0.10	2.21	2.0
CD53-100MT	10±20%	100KHz,0.1V	0.13	2.02	1.8
CD53-120MT	12±20%	100KHz,0.1V	0.16	1.94	1.75
CD53-150MT	15±20%	100KHz,0.1V	0.19	1.91	1.70

CD53-180MT	18±20%	100KHz,0.1V	0.21	1.84	1.60
CD53-220MT	22±20%	100KHz,0.1V	0.28	1.65	1.50
CD53-270MT	27±20%	100KHz,0.1V	0.32	1.52	1.40
CD53-330MT	33±20%	100KHz,0.1V	0.38	1.31	1.10
CD53-390MT	39±20%	100KHz,0.1V	0.42	1.25	1.00
CD53-470MT	47±20%	100KHz,0.1V	0.52	1.15	0.90
CD53-560MT	56±20%	100KHz,0.1V	0.56	1.02	0.85
CD53-680MT	68±20%	100KHz,0.1V	0.68	0.96	0.80
CD53-820MT	82±20%	100KHz,0.1V	0.82	0.76	0.65
CD53-101MT	100±20%	100KHz,0.1V	1.10	0.72	0.60
CD53-121MT	120±20%	100KHz,0.1V	1.20	0.67	0.58
CD53-151MT	150±20%	100KHz,0.1V	1.50	0.54	0.43
CD53-181MT	180±20%	100KHz,0.1V	1.80	0.50	0.41
CD53-221MT	220±20%	100KHz,0.1V	2.00	0.49	0.37
CD53-271MT	270±20%	100KHz,0.1V	2.90	0.45	0.35
CD53-331MT	330±20%	100KHz,0.1V	3.30	0.39	0.28
CD53-391MT	390±20%	100KHz,0.1V	3.70	0.36	0.26
CD53-471MT	470±20%	100KHz,0.1V	4.90	0.31	0.20

CD54 Series

Part Number	Inductance	Test Conditions	DC Resistance Max.	Saturation Current	Heat Rating Current
Unit	uH	-	OHM	A	A
Symbol	L	-	DCR	Isat	Irms
CD54-1R0NT	1.0±20%	100KHz,0.1V	0.020	5.16	5.0
CD54-2R2NT	2.2±20%	100KHz,0.1V	0.25	4.97	4.8
CD54-3R3NT	3.3±20%	100KHz,0.1V	0.017	4.65	4.5
CD54-3R9MT	3.9±20%	100KHz,0.1V	0.030	3.62	3.5
CD54-4R7MT	4.7±20%	100KHz,0.1V	0.040	3.16	3.0
CD54-5R6MT	5.6±20%	100KHz,0.1V	0.04	2.92	2.8
CD54-6R8MT	6.8±20%	100KHz,0.1V	0.08	2.63	2.5
CD54-100MT	10±20%	100KHz,0.1V	0.10	1.57	1.44
CD54-120MT	12±20%	100KHz,0.1V	0.12	1.54	1.40
CD54-150MT	15±20%	100KHz,0.1V	0.14	1.42	1.30
CD54-180MT	18±20%	100KHz,0.1V	0.15	1.33	1.23
CD54-220MT	22±20%	100KHz,0.1V	0.18	1.24	1.11
CD54-270MT	27±20%	100KHz,0.1V	0.20	1.14	0.97
CD54-330MT	33±20%	100KHz,0.1V	0.23	1.03	0.88
CD54-390MT	39±20%	100KHz,0.1V	0.32	0.93	0.80
CD54-470MT	47±20%	100KHz,0.1V	0.37	0.82	0.72
CD54-560MT	56±20%	100KHz,0.1V	0.42	0.77	0.68
CD54-680MT	68±20%	100KHz,0.1V	0.46	0.73	0.61
CD54-820MT	82±20%	100KHz,0.1V	0.60	0.69	0.58
CD54-101MT	100±20%	100KHz,0.1V	0.70	0.65	0.52
CD54-121MT	120±20%	100KHz,0.1V	0.93	0.56	0.48
CD54-151MT	150±20%	100KHz,0.1V	1.10	0.51	0.40
CD54-181MT	180±20%	100KHz,0.1V	1.83	0.49	0.38
CD54-221MT	220±20%	100KHz,0.1V	1.57	0.45	0.35

CD73 Series

Part Number	Inductance	Test Conditions	DC Resistance Max.	Saturation Current	Heat Rating Current
-------------	------------	-----------------	-----------------------	-----------------------	------------------------

Unit	uH	-	OHM	A	A
Symbol	L	-	DCR	Isat	Irms
CD73-1R0NT	1.0±20%	100KHz,0.1V	0.018	7.21	7.0
CD73-1R5NT	1.5±20%	100KHz,0.1V	0.020	6.17	6.0
CD73-2R2NT	2.2±20%	100KHz,0.1V	0.023	5.15	5.0
CD73-3R3NT	3.3±20%	100KHz,0.1V	0.025	4.15	4.0
CD73-4R7MT	4.7±20%	100KHz,0.1V	0.039	3.67	3.5
CD73-6R8MT	6.8±20%	100KHz,0.1V	0.04	2.98	2.8
CD73-100MT	10±20%	100KHz,0.1V	0.08	1.62	1.44
CD73-120MT	12±20%	100KHz,0.1V	0.09	1.57	1.39
CD73-150MT	15±20%	100KHz,0.1V	0.10	1.45	1.24
CD73-180MT	18±20%	100KHz,0.1V	0.11	1.32	1.12
CD73-220MT	22±20%	100KHz,0.1V	0.13	1.26	1.07
CD73-270MT	27±20%	100KHz,0.1V	0.15	1.13	0.94
CD73-330MT	33±20%	100KHz,0.1V	0.17	1.00	0.85
CD73-390MT	39±20%	100KHz,0.1V	0.22	0.93	0.74
CD73-470MT	47±20%	100KHz,0.1V	0.025	0.81	0.68
CD73-560MT	56±20%	100KHz,0.1V	0.028	0.76	0.64
CD73-680MT	68±20%	100KHz,0.1V	0.33	0.72	0.59
CD73-820MT	82±20%	100KHz,0.1V	0.41	0.63	0.54
CD73-101MT	100±20%	100KHz,0.1V	0.48	0.61	0.51
CD73-121MT	120±20%	100KHz,0.1V	0.64	0.58	0.49
CD73-151MT	150±20%	100KHz,0.1V	0.76	0.55	0.40
CD73-181MT	180±20%	100KHz,0.1V	1.02	0.47	0.36
CD73-221MT	220±20%	100KHz,0.1V	1.20	0.42	0.31
CD73-271MT	270±20%	100KHz,0.1V	1.31	0.40	0.29
CD73-331MT	330±20%	100KHz,0.1V	1.50	0.38	0.28

CD75 Series

Part Number	Inductance	Test Conditions	DC Resistance Max.	Saturation Current	Heat Rating Current
Unit	uH	-	OHM	A	A
Symbol	L	-	DCR	Isat	Irms
CD75-1R0NT	1.0±20%	100KHz,0.1V	0.013	7.67	7.5
CD75-2R2NT	2.2±20%	100KHz,0.1V	0.023	5.43	5.3
CD75-3R3NT	3.3±20%	100KHz,0.1V	0.028	4.64	4.5
CD75-4R7MT	4.7±20%	100KHz,0.1V	0.045	4.15	4.0
CD75-6R8MT	6.8±20%	100KHz,0.1V	0.058	3.34	3.2
CD75-8R2MT	8.2±20%	100KHz,0.1V	0.07	2.97	2.8
CD75-100MT	10±20%	100KHz,0.1V	0.07	2.47	2.3
CD75-120MT	12±20%	100KHz,0.1V	0.08	2.14	2.0
CD75-150MT	15±20%	100KHz,0.1V	0.09	1.98	1.8
CD75-180MT	18±20%	100KHz,0.1V	0.10	1.74	1.6
CD75-220MT	22±20%	100KHz,0.1V	0.11	1.62	1.5
CD75-270MT	27±20%	100KHz,0.1V	0.12	1.45	1.3
CD75-330MT	33±20%	100KHz,0.1V	0.13	1.32	1.2
CD75-390MT	39±20%	100KHz,0.1V	0.16	1.24	1.1
CD75-470MT	47±20%	100KHz,0.1V	0.18	1.24	1.1
CD75-560MT	56±20%	100KHz,0.1V	0.24	1.15	0.94
CD75-680MT	68±20%	100KHz,0.1V	0.28	0.96	0.85
CD75-820MT	82±20%	100KHz,0.1V	0.37	0.89	0.78

CD75-101MT	100±20%	100KHz,0.1V	0.43	0.83	0.72
CD75-121MT	120±20%	100KHz,0.1V	0.64	0.76	0.66
CD75-151MT	150±20%	100KHz,0.1V	0.47	0.63	0.58
CD75-181MT	180±20%	100KHz,0.1V	0.71	0.58	0.51
CD75-221MT	220±20%	100KHz,0.1V	0.96	0.54	0.49
CD75-271MT	270±20%	100KHz,0.1V	1.11	0.51	0.42
CD75-331MT	330±20%	100KHz,0.1V	1.26	0.48	0.40
CD75-391MT	390±20%	100KHz,0.1V	1.77	0.44	0.36
CD75-471MT	470±20%	100KHz,0.1V	1.96	0.43	0.34

CD104 Series

Part Number	Inductance	Test Conditions	DC Resistance Max.	Saturation Current	Heat Rating Current
Unit	uH	-	OHM	A	A
Symbol	L	-	DCR	Isat	Irms
CD104-1R0NT	1.0±20%	100KHz,0.1V	0.012	8.84	8.70
CD104-2R2NT	2.2±20%	100KHz,0.1V	0.020	5.53	5.40
CD104-3R3NT	3.3±20%	100KHz,0.1V	0.038	3.01	2.85
CD104-4R7MT	4.7±20%	100KHz,0.1V	0.040	2.95	2.75
CD104-5R6MT	5.6±20%	100KHz,0.1V	0.042	2.90	2.70
CD104-6R8MT	6.8±20%	100KHz,0.1V	0.05	2.85	2.65
CD104-8R2MT	8.2±20%	100KHz,0.1V	0.07	2.80	2.60
CD104-100MT	10±20%	100KHz,0.1V	0.05	2.56	2.38
CD104-120MT	12±20%	100KHz,0.1V	0.06	2.44	2.13
CD104-150MT	15±20%	100KHz,0.1V	0.07	2.01	1.87
CD104-180MT	18±20%	100KHz,0.1V	0.07	1.94	1.73
CD104-220MT	22±20%	100KHz,0.1V	0.09	1.83	1.60
CD104-270MT	27±20%	100KHz,0.1V	0.10	1.62	1.44
CD104-330MT	33±20%	100KHz,0.1V	0.12	1.41	1.26
CD104-390MT	39±20%	100KHz,0.1V	0.15	1.33	1.20
CD104-470MT	47±20%	100KHz,0.1V	0.17	1.23	1.10
CD104-560MT	56±20%	100KHz,0.1V	0.20	1.16	1.01
CD104-680MT	68±20%	100KHz,0.1V	0.22	1.06	0.91
CD104-820MT	82±20%	100KHz,0.1V	0.25	1.02	0.85
CD104-101MT	100±20%	100KHz,0.1V	0.34	0.92	0.74
CD104-121MT	120±20%	100KHz,0.1V	0.40	0.84	0.69
CD104-151MT	150±20%	100KHz,0.1V	0.54	0.73	0.61
CD104-181MT	180±20%	100KHz,0.1V	0.62	0.69	0.56
CD104-221MT	220±20%	100KHz,0.1V	0.72	0.62	0.53
CD104-271MT	270±20%	100KHz,0.1V	0.95	0.56	0.45
CD104-331MT	330±20%	100KHz,0.1V	1.10	0.51	0.42
CD104-391MT	390±20%	100KHz,0.1V	1.25	0.49	0.38
CD104-471MT	470±20%	100KHz,0.1V	1.53	0.45	0.35
CD104-561MT	560±20%	100KHz,0.1V	1.90	0.43	0.32

CD105 Series

Part Number	Inductance	Test Conditions	DC Resistance Max.	Saturation Current	Heat Rating Current
Unit	uH	-	OHM	A	A
Symbol	L	-	DCR	Isat	Irms
CD105-1R0NT	1.0±20%	100KHz,0.1V	0.009	8.85	8.63
CD105-2R2NT	2.2±20%	100KHz,0.1V	0.016	7.43	7.20

CD105-3R3NT	3.3±20%	100KHz,0.1V	0.018	6.68	6.50
CD105-4R7MT	4.7±20%	100KHz,0.1V	0.02	5.72	5.50
CD105-6R8MT	6.8±20%	100KHz,0.1V	0.04	4.64	4.50
CD105-100MT	10±20%	100KHz,0.1V	0.06	2.79	2.60
CD105-120MT	12±20%	100KHz,0.1V	0.07	2.66	2.45
CD105-150MT	15±20%	100KHz,0.1V	0.08	2.47	2.27
CD105-180MT	18±20%	100KHz,0.1V	0.09	2.31	2.15
CD105-220MT	22±20%	100KHz,0.1V	0.10	2.11	1.95
CD105-270MT	27±20%	100KHz,0.1V	0.11	1.93	1.76
CD105-330MT	33±20%	100KHz,0.1V	0.12	1.65	1.50
CD105-390MT	39±20%	100KHz,0.1V	0.14	1.51	1.37
CD105-470MT	47±20%	100KHz,0.1V	0.17	1.45	1.28
CD105-560MT	56±20%	100KHz,0.1V	0.19	1.34	1.17
CD105-680MT	68±20%	100KHz,0.1V	0.22	1.26	1.11
CD105-820MT	82±20%	100KHz,0.1V	0.25	1.14	1.00
CD105-101MT	100±20%	100KHz,0.1V	0.35	1.08	0.97
CD105-121MT	120±20%	100KHz,0.1V	0.40	1.01	0.89
CD105-151MT	150±20%	100KHz,0.1V	0.47	0.93	0.78
CD105-181MT	180±20%	100KHz,0.1V	0.63	0.88	0.72
CD105-221MT	220±20%	100KHz,0.1V	0.73	0.76	0.66
CD105-271MT	270±20%	100KHz,0.1V	0.97	0.65	0.57
CD105-331MT	330±20%	100KHz,0.1V	1.15	0.61	0.52
CD105-391MT	390±20%	100KHz,0.1V	1.30	0.57	0.48
CD105-471MT	470±20%	100KHz,0.1V	1.48	0.51	0.42
CD105-561MT	560±20%	100KHz,0.1V	1.90	0.43	0.33
CD105-681MT	680±20%	100KHz,0.1V	2.25	0.37	0.28
CD105-821MT	820±20%	100KHz,0.1V	2.55	0.33	0.24

※1: All test data is referenced to 20℃ ambient;

※2: Rated current: Isat or Irms, whichever is smaller;

※3: Isat: DC current at which the inductance drops approximate 30% from its value without current;

※4: Irms:DC current that causes the temperature rise($\Delta T=40^{\circ}\text{C}$) from 20℃ ambient.

PACKAGING

Series	Quantity (pcs/reel)	Series	Quantity (pcs/reel)	Series	Quantity (pcs/reel)
CD3511	5000	CD53	1500	CD105	750
CD3516	3000	CD54	1500		
CD32	3000	CD73	1000		
CD43	2000	CD75	1000		
CD52	2500	CD104	750		